

# The Tillage Master is:

- A Ripper
- A Bed Splitter
- A Diker
- A Lister/Mark-Out Bar
- A Chisel Plow
- A Drill Master



◀ The new double tool bar design with the high-lift, hydraulic reset shanks gives trouble free inter-row ripping and diking in the most severe rocky conditions.

- Shanks trip and reset upon impact.
- Shanks trip clear of even large rocks.
- The back of the machine is left open for easy adjustment and access.
- The “floating” arm assemblies assure proper spider depth and channel closure every time.



◀ The double bar configuration is easily converted to a Tillage Master capable of a number of tillage chores;

- Retractable reset shanks can be added for bed splitting.
- A cage roller can replace the spiders for rolling beds or field finishing.
- Tillage choppers chop and mulch crop residue into the soil surface.



◀ A Dammer Diker Drill can be coupled to the Tillage Master for reservoir seeding.

**DAMMER DIKER®**

**1-800-627-9099**

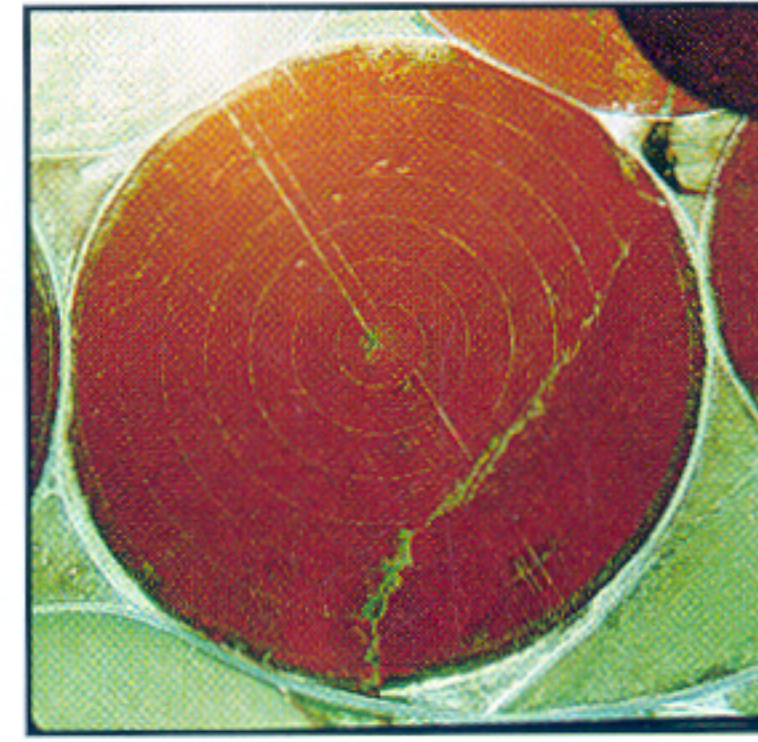


# The results: *Equalized*

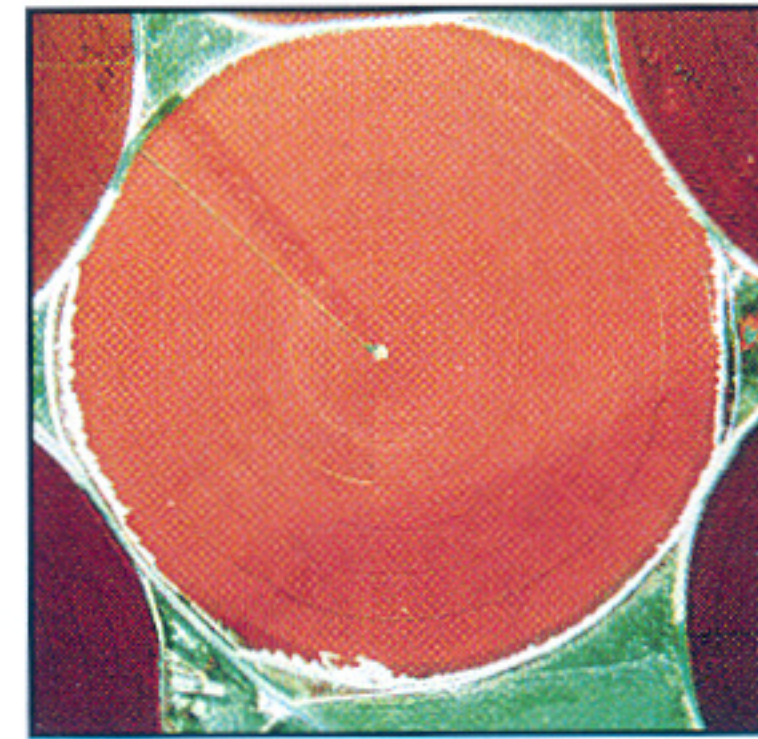
Each plant has equal access to moisture, nutrients, temperature and air.



The Dammer Diker stops water runoff before it starts. This pivot irrigated potato field shows the difference when one pass with the Dammer Diker was left out.



This infrared photograph taken in August shows how erosion and water runoff adversely affect crop growth and yields. Low areas in the field are too wet while ridges are too dry.



This same circle photographed in infrared during August 3 years later shows a dramatic improvement after use of the Dammer Diker. Runoff is eliminated and crops are uniform and significantly better.

## Dammer Diker<sup>®</sup>: *Optional Equipment*

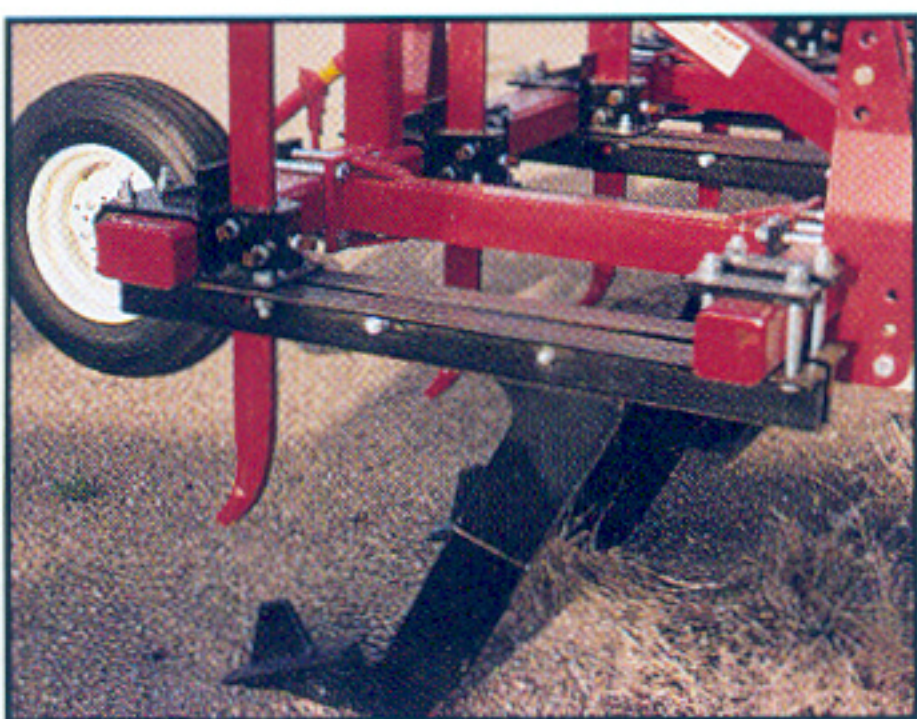


The adjustable hilling wings are used for cultivation and hill formation during inter-row ripping.

The one inch Dyco wear points give minimal soil disturbance while opening the soil.



The optional A-2615 adapter clamp allows coulters to be mounted in front of the angular shank.



The A-2610 adapter clamp allows a 1x3 cultivator shank to be placed in front of the inter-row ripper shank.

The long lasting Sharkfin wear point splits the soil to reduce root damage and clod ribbons.



Mesh rollers for smoothing the seed bed surface, rolling beds and busting clods.



**Ag Engineering  
& Development Co.**  
P.O. Box 2814  
Tri-Cities, WA 99302

**1-800-627-9099**